



# Littledean C of E Primary School Newsletter 21

Dear Parents

23<sup>rd</sup> February 2024

## Christian Value – Term 4

Our Christian Value for life this term is

**FORGIVENESS**

## Forest of Dean District Council Artwork Competition

As part of a piece of research which is being carried out around the regeneration of our 4 market towns, the FOD District Council is calling on Primary school children to get involved by producing some artwork.

The idea is for primary school students (of all ages) to create a piece of artwork which represents one of the four market towns in the Forest of Dean: Cinderford; Coleford; Lydney; Newent.

## Help shape the look of your Market town!

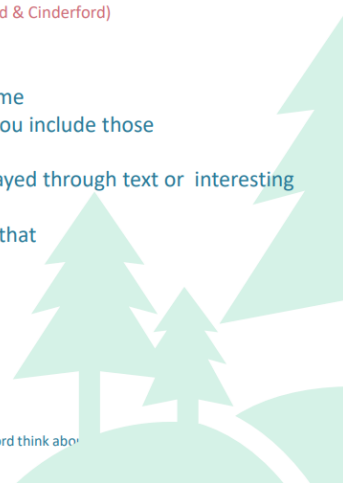
**We are asking primary school children to cut, paste, stick and make an A4 collage that represents your Market town.** (Lydney, Newent Coleford & Cinderford)

### Things to think about:

- What colour best represents your market town? Choose this as the main colour theme
- What is there most of? Trees, open space, buildings, beach, play parks? Make sure you include those
- What is your town best at? Find a picture that represents it.
- What is the personality of your town? Edgy, old fashioned, cool? This could be displayed through text or interesting font choices
- How does your town make you feel? Could you find a picture of (or draw) a person that represents this emotion

Take a photograph of your creations and email it to [regeneration@fdean.gov.uk](mailto:regeneration@fdean.gov.uk) by Friday 1<sup>st</sup> March. The artists of 4 selected creations from each town will be invited to meet our design team to talk through their process and inspire the final designs.

Forest of Dean Council is conducting market research to better understand how residents of Lydney, Newent, Coleford and Cinderford think about their towns. Market research is conducted by Flying Geese Consultancy



# **To celebrate the** **Leap year**

**The Friends are inviting you to**

**Leap into an  
outfit of your  
choice**

This could be a favourite outfit, a costume or even your  
pyjamas. 😊

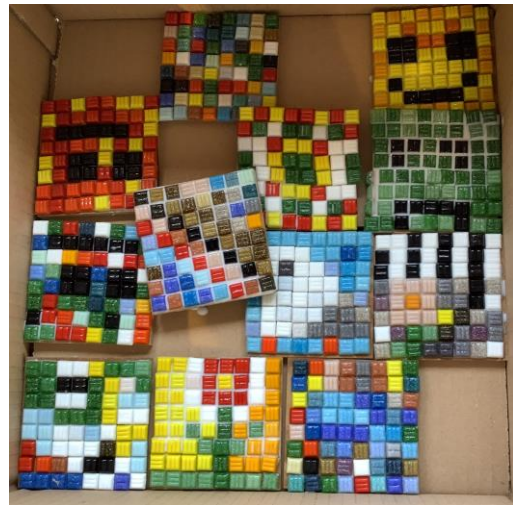
**Thursday 29th February  
£1:00 donation required.**



## Chestnut Class visit to Chedworth Roman Villa

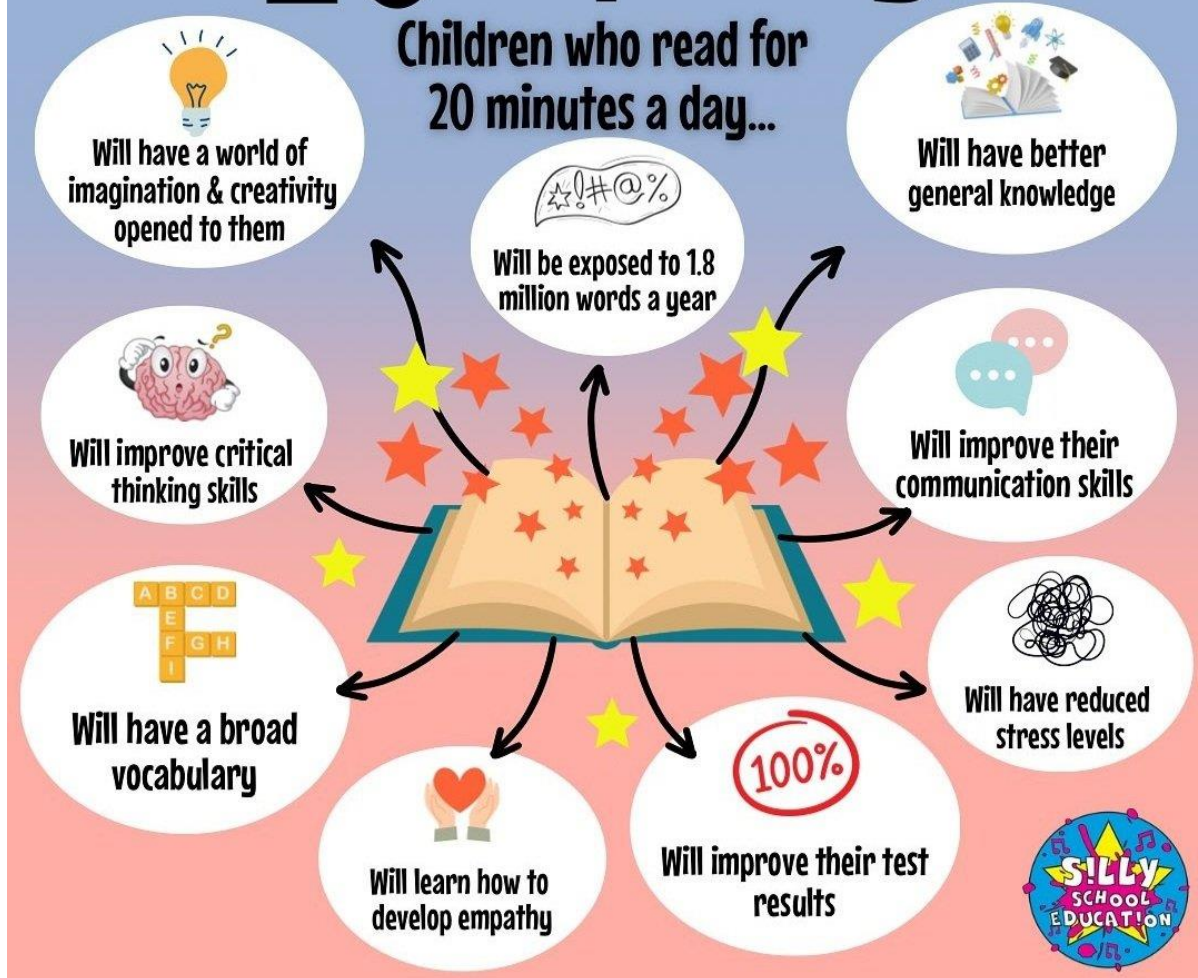
Chestnut Class visited Chedworth Roman Villa as part of their history topic 'The Romans'. During the day, they had a tour around the Roman villa with a guide who told them all about what the site would have been like 2,000 years ago. They saw mosaic floors, learnt how a Roman would have washed and were horrified to learn about the Roman equivalent of toilet roll!

Each child also made a mosaic coaster inspired by the Roman mosaic floors they had seen around the villa.



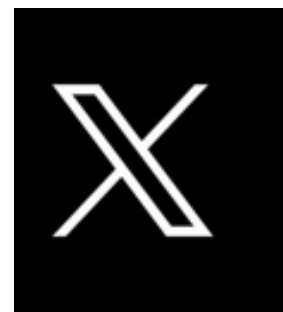
# 20 is plenty!

Children who read for  
20 minutes a day...



## X (Formerly Twitter) account

Miss May has been very busy keeping our X (twitter) feed up to date and sharing our achievements with our twitter community. We can be found at @littledeansch.  
[www.littledeanprimary.co.uk](http://www.littledeanprimary.co.uk)





## **World Book Day – Thursday 7<sup>th</sup> March 2024**

On our World Book Day we will be asking our children (and adults) to come to school dressed as their favourite book character.

Parents are invited to our parade in the hall starting at 9.00 a.m.

We ask parents to stay and enjoy a book and a bun with our children. The event should be finished by 10.30.

Looking forward to a great day celebrating reading and all things related to books.



## **Comic Relief – Friday 15<sup>th</sup> March 2024**



This year we ask the children to wear red on Red Nose Day, Friday 15<sup>th</sup> March 2024. A free donation page is being set up on our online payment system [www.parentpay.com](http://www.parentpay.com). Please donate there if you feel you are able to.

### Holiday Requests

We all look forward to a holiday away from home but, before you book, please remember that the Governments guidance remains very clear that we cannot authorise holiday requests in term time. Any requests submitted will not be authorised unless there are exceptional circumstances. You may also be fined for taking your child out of school during term time.



### Term Dates 2023 / 2024

These are also available on our website

[https://www.littledeanprimary.co.uk/website/term\\_dates/198634](https://www.littledeanprimary.co.uk/website/term_dates/198634)

**Term 4** Monday 19<sup>th</sup> February 2024 – Friday 22<sup>nd</sup> March 2024

**Term 5** Monday 8<sup>th</sup> April 2024 – Friday 24<sup>th</sup> May 2024

**Term 6** Monday 3<sup>rd</sup> June 2024 – Monday 22<sup>nd</sup> July 2024

**INSET Days** 4 8<sup>th</sup> April 2024

5 22<sup>nd</sup> July 2024

### Diary Dates

|                                     |   |
|-------------------------------------|---|
| Wednesday 28 <sup>th</sup> February | Governors Curriculum Committee                            |
| Thursday 29 <sup>th</sup> February  | Friends Leap Year Activities                              |
| Friday 1 <sup>st</sup> March        | Wellbeing Champions visit to Viney Hill Centre            |
| Friday 1 <sup>st</sup> March        | National Allocation day for Secondary School places       |
| Tuesday 5 <sup>th</sup> March       | Governors Leadership Committee                            |
| Tuesday 5 <sup>th</sup> March       | Parental Consultations – Afternoon                        |
| Wednesday 6 <sup>th</sup> March     | Parental Consultations – Afternoon and Evening            |
| Thursday 7 <sup>th</sup> March      | World Book Day Parade, Book and a Bun                     |
| Friday 8 <sup>th</sup> March        | Friends Mother's Day Pop up Shop                          |
| Friday 15 <sup>th</sup> March       | Red Nose Day  |
| Thursday 21 <sup>st</sup> March     | Experience Easter at St Ethelbert's Church                |
| Friday 22 <sup>nd</sup> March       | Last day of term, Easter service at St Ethelbert's Church |
| Friday 29 <sup>th</sup> March       | Friends Easter Egg Hunt                                   |
| Friday 12 <sup>th</sup> April       | Governors Learning Walk - PSHCE                           |
| Wednesday 17 <sup>th</sup> April    | National Allocation Day for reception pupils              |
| Wednesday 17 <sup>th</sup> April    | Swimming session 1  |
| W/c Monday 13 <sup>th</sup> May     | Year 6 SATS week  |
| Wednesday 22 <sup>nd</sup> May      | Maple Class Visit to Gloucestershire Wildlife Trust       |
| Tuesday 4 <sup>th</sup> June        | Maple Class Adventure Day – Wilderness Centre             |